

### 1. DESCRIPTION

**ISOVIT PAINEL ICB** is a compact panel of black expanded cork agglomerate (ICB – Insulation Cork Board), thermal and acoustic insulator, imputrescible, dimensionally stable and unalterable over time, 100% environmentally friendly and recyclable, from a renewable raw material, seeing that extraction of the cork oak bark is part of its life cycle.

In its manufacture only cork granules are used, which, when subjected to a thermal process, release a resin, suberin, which acts as a natural binder.

**ISOVIT PAINEL ICB** is available in 20 mm to 100 mm thicknesses (other thicknesses are available on request).

### 2. FIELD OF USE

**ISOVIT PAINEL ICB** is used as thermo-acoustic insulation in the **ISOVIT CORK (ETICS)** external thermal insulation composite system, correcting linear thermal bridges and reducing their thermal transmission, thereby improving the energy efficiency of the building where it is set up, as well as the acoustic comfort of houses by increasing insulation to the outside noise (air sounds).



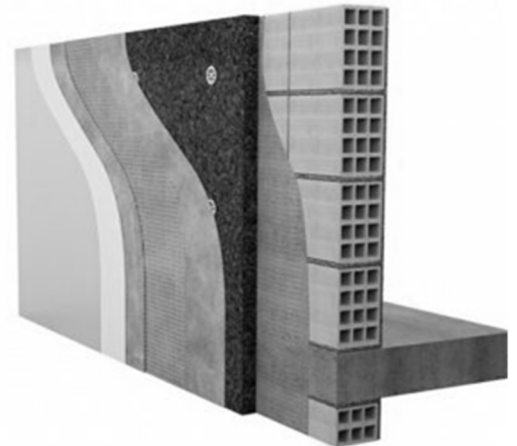
Flat roofs



Inclined roofs



Under floor slabs



ETICS with ICB cork panels, Isovit e-cork and Reabilita CAL AC mortars

### 3. PRODUCT CHARACTERISTICS

Technical Characteristics	VALUE	STANDARD
<b>Length</b>	1000 ± 5 mm (Class L2)	NP EN 822
<b>Width</b>	500 ± 3 mm (Class W2)	NP EN 822
<b>Thickness</b>	(20 to 50 mm) ± 1 mm (Class T1) (55 to 160 mm) ± 2 mm (Class T2)	NP EN 823
<b>Squareness</b>	≤ 2 mm	NP EN 824
<b>Flatness</b>	≤ 2 mm	NP EN 825
<b>Apparent density</b>	≤ 130 kg/m <sup>3</sup>	NP EN 1602
<b>Thermal Conductivity coefficient</b>	≤ 0,04 W/m.K	EN 12667
<b>Dynamic Rigidity (per 50 mm thickness)</b>	≤ 126 MN/m <sup>3</sup> (Class SD126)	EN 29052-1

<b>Flexural Strength</b>	≥ 130 kPa	NP EN 12089
<b>Compressive Strength (10 % deformation)</b>	≥ 100 kPa (Class CS(10)100)	NP EN 826
<b>Tensile strength perpendicular to the sides</b>	≥ 50 kPa (Class TR50)	NP EN 1607
<b>Water Content</b>	≤ 8 %	EN 12105
<b>Water Absorption</b>	≤ 0,5 kg/m <sup>2</sup> (Class WS)	NP EN 1609
<b>Reaction to fire</b>	Euroclass E	NP ISO 11925-1

#### 4. PACKAGING

- 7,5 m<sup>2</sup> - 20 mm thickness
- 5,0 m<sup>2</sup> - 30 mm thickness
- 4,0 m<sup>2</sup> - 40 mm thickness
- 3,0 m<sup>2</sup> - 50 mm thickness
- 2,5 m<sup>2</sup> - 60 mm thickness
- 2,0 m<sup>2</sup> - 70 mm thickness
- 2,0 m<sup>2</sup> - 80 mm thickness
- 1,5 m<sup>2</sup> - 90 mm thickness
- 1,5 m<sup>2</sup> - 100 mm thickness

#### Storage

**ISOVIT PAINEL** should be stored in a dry place, protected from sunlight exposure and placed horizontally on a totally flat surface so as not to cause twists on the panels.

#### 6. HEALTH AND SAFETY

- Handling of this product does not require special care.

*Being the conditions of applying our products out of our reach we do not take responsibility for its misuse. It is the customer's duty to verify the suitability of the product for the intended purpose. In any case, our responsibility is limited to the value of the goods supplied by us. The information contained in the present data sheet may be altered without prior notice. In case of doubt and if you need any further advice please contact our Technical Services.*

Revision of March 2019

FT 13016.01 EN